



Speldhurst Road, London, W4 1BX

Guide Price £1,200,000

WHITMAN & CO.

SALES · LETTINGS · COMMERCIAL

- Fantastic transport links
- Sought-after residential street
- Within the catchment area of an outstanding primary school
- Host of original features
- Beautifully presented
- 47' landscaped garden with rear access

Tenure - Freehold
 Local Authority - Ealing
 Council Tax - Band F

THE PROPERTY

A light and spacious period family home offering an excellent balance of living and entertaining space, situated on a sought-after residential street.

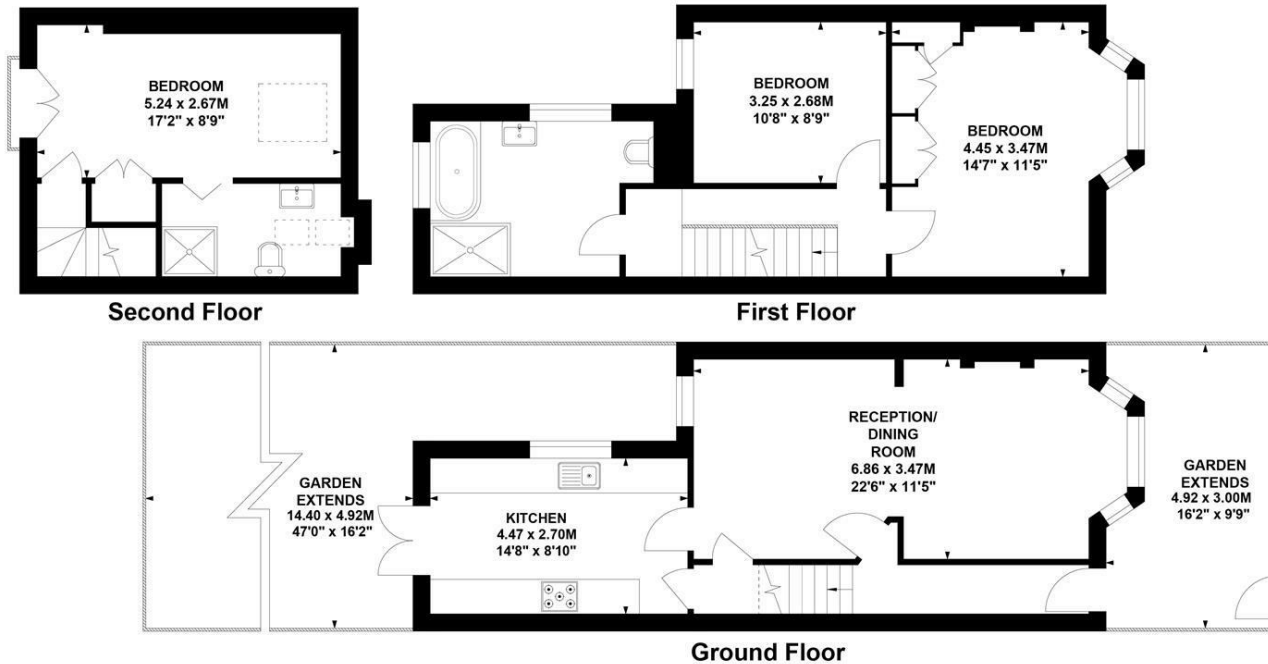
The property features a master bedroom with en suite, two further double bedrooms, a luxury bathroom, a 22' through reception room, and a recently fitted bespoke kitchen. Further benefits include a private 47' landscaped garden with rear access.

Ideally located within close proximity to Turnham Green Tube Station and the extensive range of shops, bars, and restaurants on Chiswick High Road.

Speldhurst Road, W4

Approximate Gross Internal Area
 101.8 sq m / 1095 sq ft

Key :
 CH - Ceiling Height



Not to scale, for guidance only and must not be relied upon as a statement of fact.
 All measurements and areas are approximate only

SITUATION



5-7 Turnham Green Terrace, Chiswick, London, W4 1RG
 Tel 020 8747 8800

E-mail sales@whitmanandco.com
 Website www.whitmanandco.com